



Bardi Jawi Gaarra Marine Park

Implementation of New Fishing Rules

Introduction

The Bardi Jawi Gaarra Marine Park (BJGMP) was created by the Western Australian (WA) Government in July 2022, as part of the broader Buccaneer Archipelago Marine Parks (BAMPs) planning process.

BJGMP is located in the Kimberley region of WA and covers approximately 204,000 hectares. It includes all of Bardi and Jawi Sea Country surrounding the northern part of the Dampier Peninsula and the western islands of the Buccaneer Archipelago, including *Iwany* (Sunday Island). The park extends from Pender Bay on the western side of the Peninsula, around the tip to Cunningham Point on the eastern side of the Peninsula. The eastern boundary borders the Mayala Marine Park, and part of the western boundary borders the Commonwealth Kimberley Marine Park.

BJGMP is managed in accordance with the approved *Bardi Jawi Gaarra Marine Park Joint management plan 2022*. The plan, which was developed and co-designed by Bardi and Jawi Traditional Owners and the Department of Biodiversity, Conservation and Attractions (DBCA), details how the BJGMP will be jointly managed to enhance nature conservation, preserve and promote culture and heritage, and support compatible recreational and commercial use for future generations. The Department of Primary Industries and Regional Development's (DPIRD) role is to give effect to, and enforce, the fishing rules set out in the approved joint management plan.

The purpose of this document is to provide advice on the current status of the BJGMP and education about the zoning and permitted commercial fishing, pearling and aquaculture activities.

Commercial Fishing – Frequently Asked Questions

What is the current status of the BJGMP?

On 18 July 2025, the BJGMP zoning scheme was gazetted under section 62 of the *Conservation and Land Management Act 1984* (CALM Act), and on 19 September 2025 legislation was made under the *Fish Resources Management Act 1994* (FRMA) to give effect to the fishing prohibitions in the marine park.

In accordance with an established agreed government policy approach, a 12-month transitional education period is applied from the date the zoning scheme is gazetted under the CALM Act.

When will the fishing prohibitions take effect?

Commercial and recreational fishing prohibitions in the BJGMP will be enforced under the FRMA from **19 July 2026**.

Where can I find information on the zoning and fishing prohibitions?

BJGMP is a multiple use marine park. The final approved BJGMP zoning maps and permitted uses table extracted from the joint management plan are provided at **Appendix 1**. The BJGMP includes:

- three (3) sanctuary zones covering approximately 25% of the park
- four (4) special purpose zones (biocultural conservation) covering 2% of the park
- twelve (12) special purpose zones (cultural protection) covering 26% of the park
- general use in the remainder of the park, covering 47%.

Sanctuary zones

Sanctuary zones are 'look but don't take' areas which provide the highest level of protection for marine habitats and wildlife. From 19 July 2026, commercial fishing, pearling and aquaculture will not be permitted.

Special purpose zones (biocultural conservation)

These zones protect ecologically and culturally important marine ecosystems such as reefs and mangroves. From 19 July 2026, commercial fishing for trochus, mackerel, specimen shell, crab and sea cucumber will be permitted to continue in the biocultural conservation zones. All other commercial fishing activities, pearling and aquaculture will be prohibited.

Special purpose zones (cultural protection)

These zones play an important role in protecting the value of Bardi and Jawi Country to the culture and heritage of Bardi and Jawi people. While cultural and heritage values apply across the whole of the BJGMP, the cultural protection zones protect areas in Bardi and Jawi Country which are of the greatest cultural significance. These areas are regularly used by Traditional Owners for customary activities such as customary fishing, hunting and ceremonies. Many of these areas are adjacent to outstations and near Aboriginal communities. Visitors and users of the marine park are asked to respect Traditional Owners' requests for privacy while they are undertaking customary activities in these zones.

From 19 July 2026, commercial fishing will not be permitted other than for trochus collection. Pearling and aquaculture will also be prohibited.

General use zone

Commercial fishing, pearling and aquaculture activities are permitted to continue in the general use zone in accordance with the FRMA and Pearling Act.

More detailed information about individual zones and their purpose can be found in the joint management plan – [Bardi Jawi Gaarra Marine Park | Department of Biodiversity, Conservation and Attractions \(dbca.wa.gov.au\)](#)

When will the zoning of the other Buccaneer Archipelago Marine Parks be gazetted?

The BAMPs planning process also involved the creation of the Mayala Marine Park and Maiyalam Marine Park, located to the east of the BJGMP. The zoning of these 2 parks is anticipated to be gazetted under the CALM Act during the second half of 2026.

Separate advice will be provided to the fishing sectors once the zoning for these parks has been progressed. 12-month transitional arrangements will also apply to these parks.

When can I apply for compensation?

Government recognises that creation of the BAMPs, and broader Kimberly marine parks, will impact a number of commercial fishing operators. There are 2 pathways for affected commercial fishers to apply for compensation.

A Kimberley Voluntary Fisheries Adjustment Scheme (VFAS) for select commercial fisheries affected by the Kimberley marine parks provided a pathway for those commercial fishers seeking to exit a fishery and surrender their authorisation. This scheme opened on 10 April and closed on 29 May. Applications are currently being assessed.

The *Fishing and Related Industries Compensation (Marine Reserves) Act 1997* (FRICMA) provides for payment of compensation to commercial fishers affected by the establishment of a marine park if the market value of the authorisation is reduced following introduction of the marine park zoning. Those operators who wish to retain their licence and continue fishing may be eligible for compensation under FRICMA. This process is anticipated to commence in early 2027, following the VFAS outcome.

DPIRD will advise all licensees in fisheries impacted by a marine park and the Western Australian Fishing Industry Council (WAFIC) when it is time to apply for compensation under FRICMA.

Further information on commercial fishing compensation and adjustment processes is on the DPIRD website - [Commercial fishing compensation and adjustment | Department of Primary Industries and Regional Development](#).

Where can I find more information?

Further information about the BJGMP is available on the DBCA website:

- General visitor information and 2026 Visitor Guide – [Bardi Jawi Gaarra Marine Park](#)
- Joint management plan – [Bardi Jawi Gaarra Marine Park | Department of Biodiversity, Conservation and Attractions](#)

If you have any questions relating to commercial fishing, pearling or aquaculture in the BJGMP, please contact the Broome DPIRD Office on (08) 9193 8600.

Important Disclaimer

The Chief Executive Officer of the Department of Primary Industries and Regional Development and the State of Western Australia accept no liability whatsoever by reason of negligence or otherwise arising from the use or release of this information or any part of it.

Copyright © State of Western Australia (Department of Primary Industries and Regional Development) 2026.

APPENDIX 1 – BARDI JAWI GAARRA MARINE PARK ZONING AND PERMITTED USES

(refer pages 104 – 121 of the joint management plan)

Table 1: Summary of permitted uses for the Bardi Jawi Marine Park.

Activity	Sanctuary zones [a]	Special Purpose Zones (cultural protection) [a]	Special Purpose Zones (biocultural conservation)	General use zones
Customary				
Customary activities (e.g. hunting and fishing)	Yes [b]	Yes [b]	Yes [b]	Yes [b]
Commercial				
Commercial trochus collection [c]	No	Yes	Yes	Yes
Commercial mackerel fishing [c]	No	No	Yes	Yes
Commercial specimen shell fishing [c]	No	No	Yes	Yes
Commercial crab fishing [c]	No	No	Yes	Yes
Commercial sea cucumber fishing [c]	No	No	Yes	Yes
Commercial fishing (other than trochus, mackerel, specimen shell, crab and sea cucumber) [c]	No	No	No	Yes [d]
Pearling and associated activities [c]	No	No	No	Yes
Aquaculture [c]	No	No	No	Yes
Scenic flights (charter) [c]	Yes	Yes	Yes	Yes
Ground disturbing mining and petroleum exploration and development [e]	No	No	No	Assess
Non-ground-disturbing activities including geophysical surveys, geological mapping, sampling and geochemical surveys [f]	No	No	No	Assess
Ship loading and other mining related infrastructure (e.g. ship loading docks, cabling or pipelines)	No	No	No	Assess
General marine infrastructure (e.g. groynes, jetties and boat launching facilities)	No	Assess	Assess	Assess
Artificial structures (e.g. artificial reefs)	No	No	No	Assess
Dredging and dredge spoil dumping	No	Assess [g]	Assess [g]	Assess

Activity	Sanctuary zones [a]	Special Purpose Zones (cultural protection) [a]	Special Purpose Zones (biocultural conservation)	General use zones
Commercial tour operators – fishing [c]	No	Yes	Yes	Yes
Commercial tour operators – non-extractive (e.g. wildlife viewing) [c]	Yes	Yes	Yes	Yes
Wildlife/fish feeding	No	No	No	No
Recreational				
Boating (motorised and non-motorised)	Yes	Yes	Yes	Yes
Nature appreciation and wildlife viewing	Yes	Yes	Yes	Yes
Recreational fishing [c – if from a boat]	No	No [h]	Yes [i]	Yes
Other use				
Access	Yes	Yes	Yes	Yes
Vessel transit	Yes	Yes	Yes	Yes
Navigation aids	Yes	Yes	Yes	Yes
Research and monitoring [c]	Yes	Yes	Yes	Yes
Anchoring (soft bottom only)	Yes	Yes	Yes	Yes
Mooring	Assess	Assess	Assess	Yes
Seaplane, helicopter and remotely piloted aircraft (drone) launching and landing [j]	Assess	Assess	Assess	Assess
Vessel sewage discharge and de-ballasting	No	No	No	Yes [k]

Permitted activities provisions

[a] Access may be restricted, in specific areas within a sanctuary or special purpose zone (cultural protection) if deemed necessary to protect cultural or ecological values. Existing shipping channels will be maintained.

[b] Customary take is confined to native title holders as determined under the *Native Title Act 1993* or where native title holders have provided consent to another Aboriginal person or group.

[c] Licence or permit required under the *Conservation and Land Management Act 1984* and/ or *Fish Resources Management Act 1994*.

[d] Prawn trawling is restricted in the marine park through a permanent inshore closure managed by DPIRD.

[e] Ground-disturbing mining and petroleum exploration and development activities include any activity that disturbs the land, seabed and/or subsoil within the marine park (e.g. drilling).

[f] Geophysical surveys will be assessed by the Department of Mines, Industry Regulation and Safety.

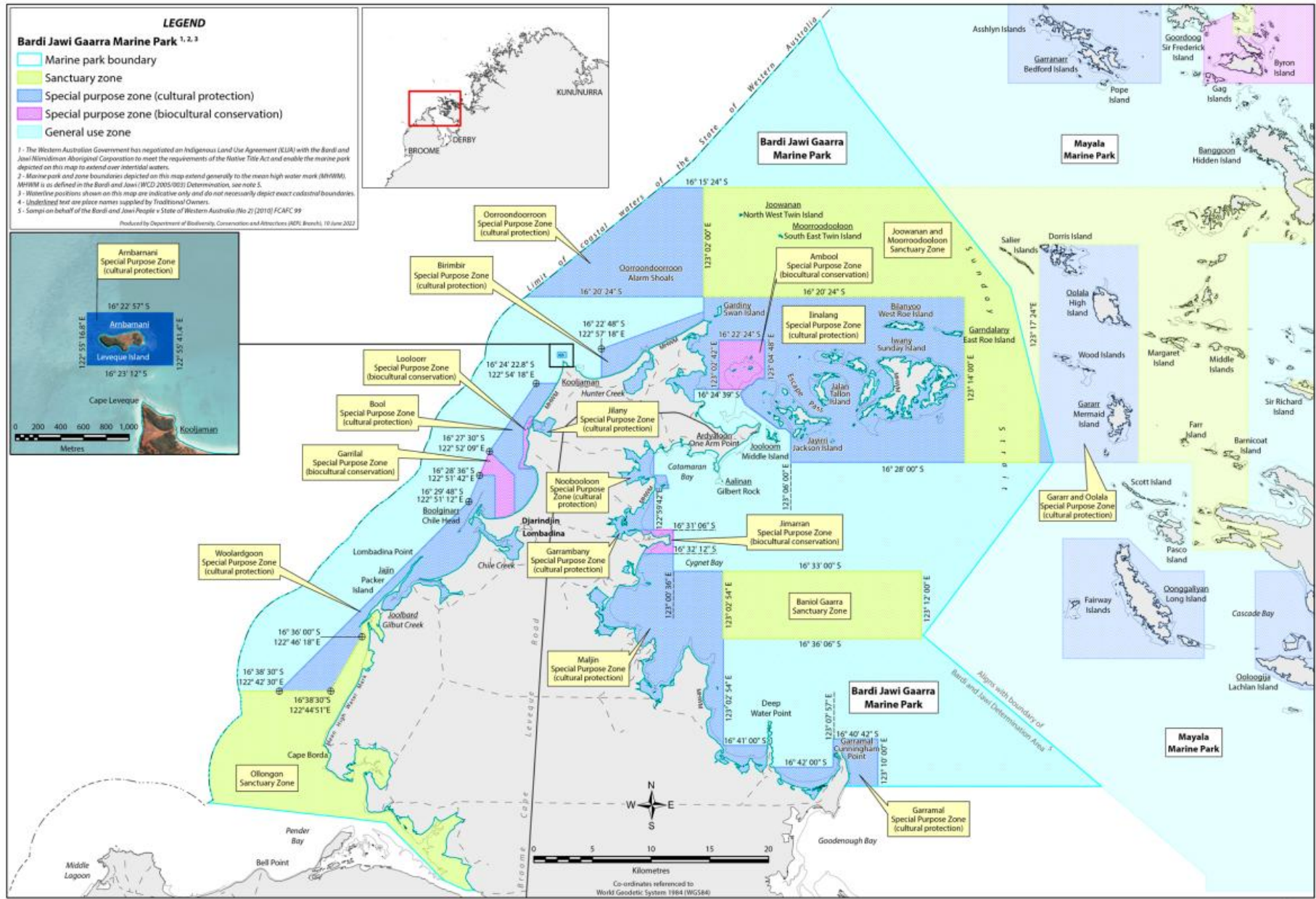
[g] Activities permitted if activity is shown to be compatible with the specified purpose of the zone. Only small-scale dredging for the purpose of public access and safety will be considered.

[h] Recreational fishing is only permitted as part of a tourism operation.

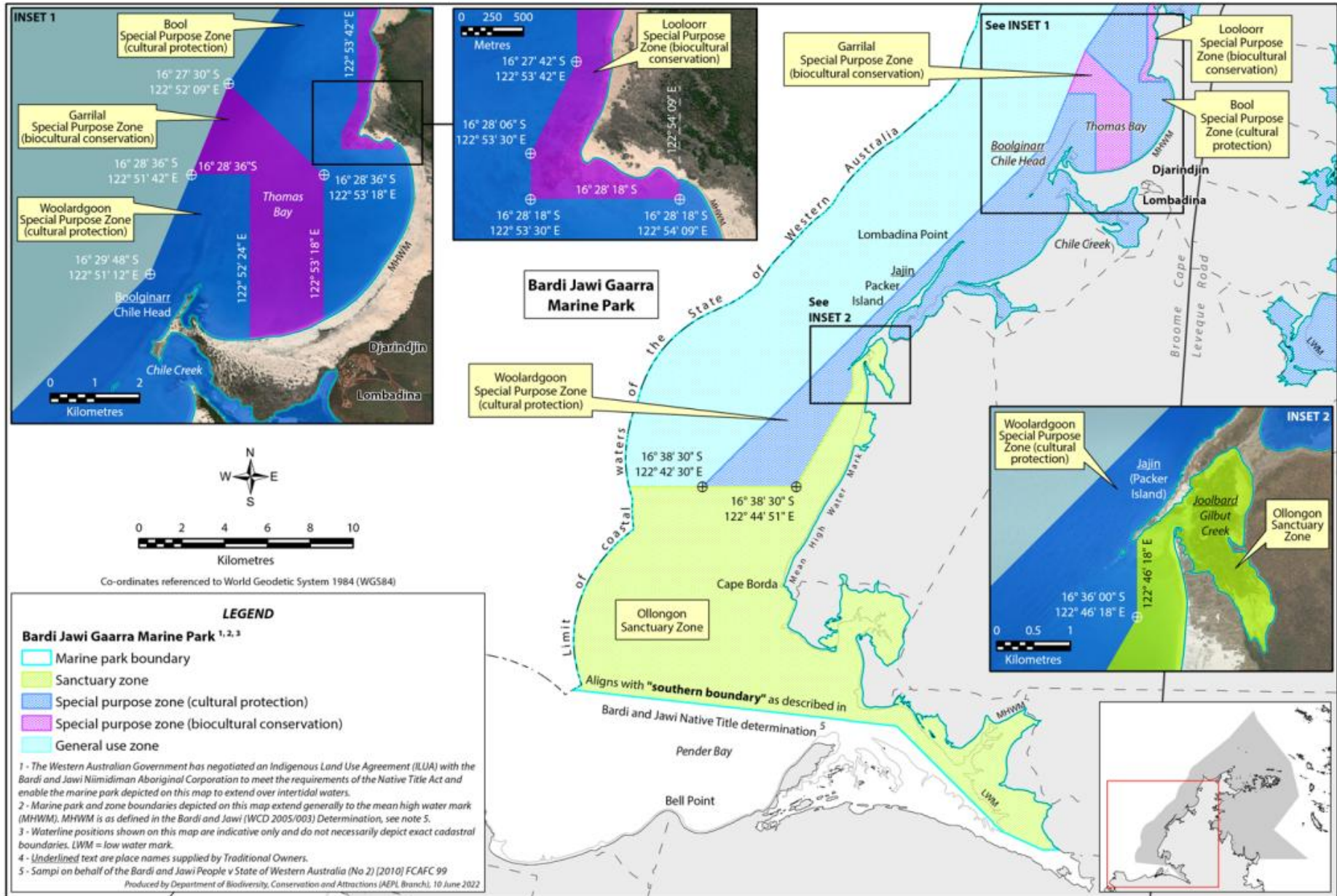
[i] Additional regulations on recreational fishing under the *Fish Resources Management Act 1994* are likely to occur in special purpose zones (biocultural conservation).

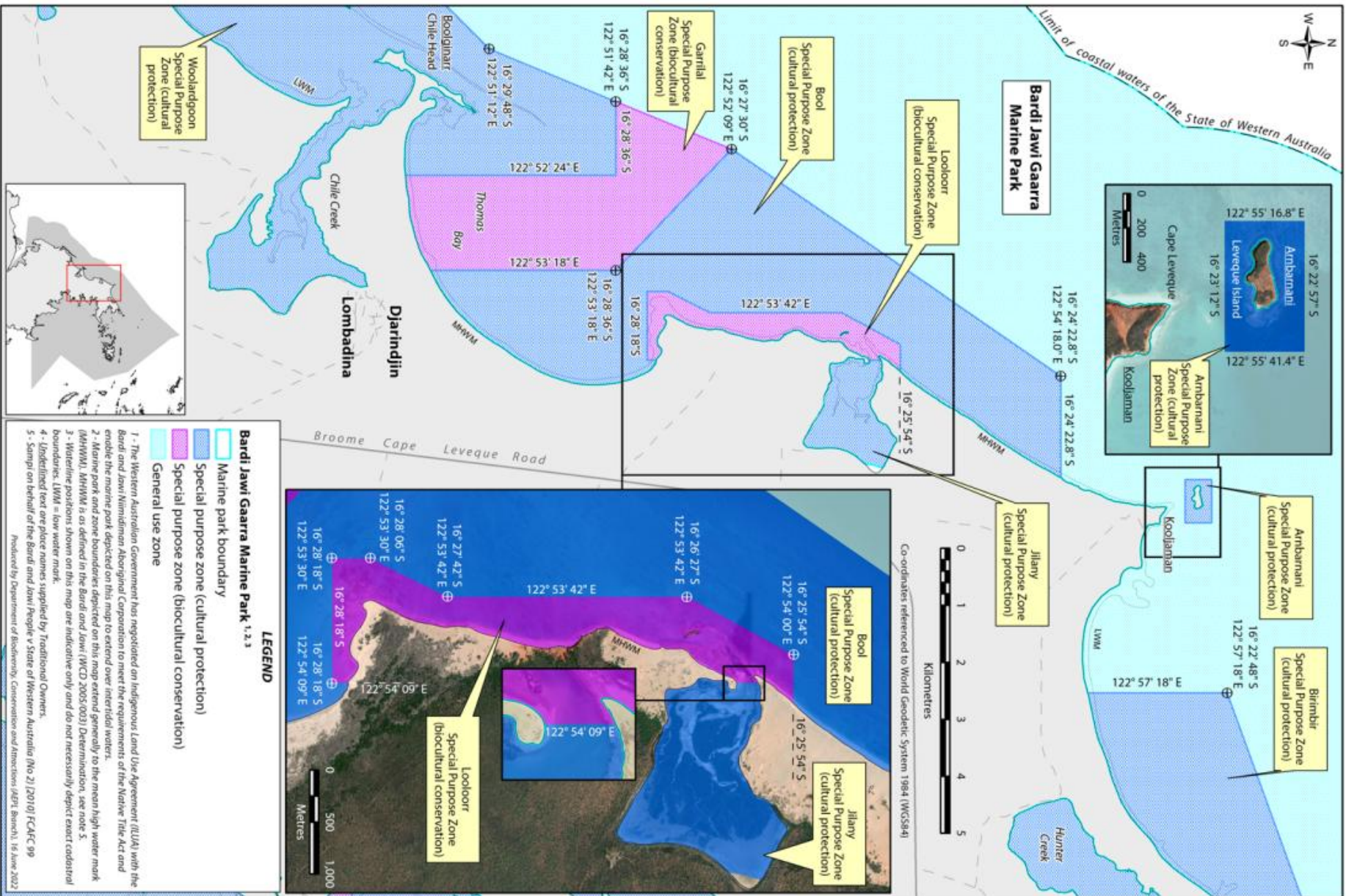
[j] Lawful authority must be obtained to launch, land or touchdown in an aircraft on CALM Act lands and waters.

[k] Only in gazetted sewage discharge areas.



Map 7: Zoning for Bardi Jawi Gaarra Marine Park





Map 9: Zoning for Bardi Jawi Gaarra Marine Park - Thomas Bay area

Map 10: Zoning for Bardi Jawi Gaarra Marine Park - Iwany (Sunday Island) area

